

50/113

50/113

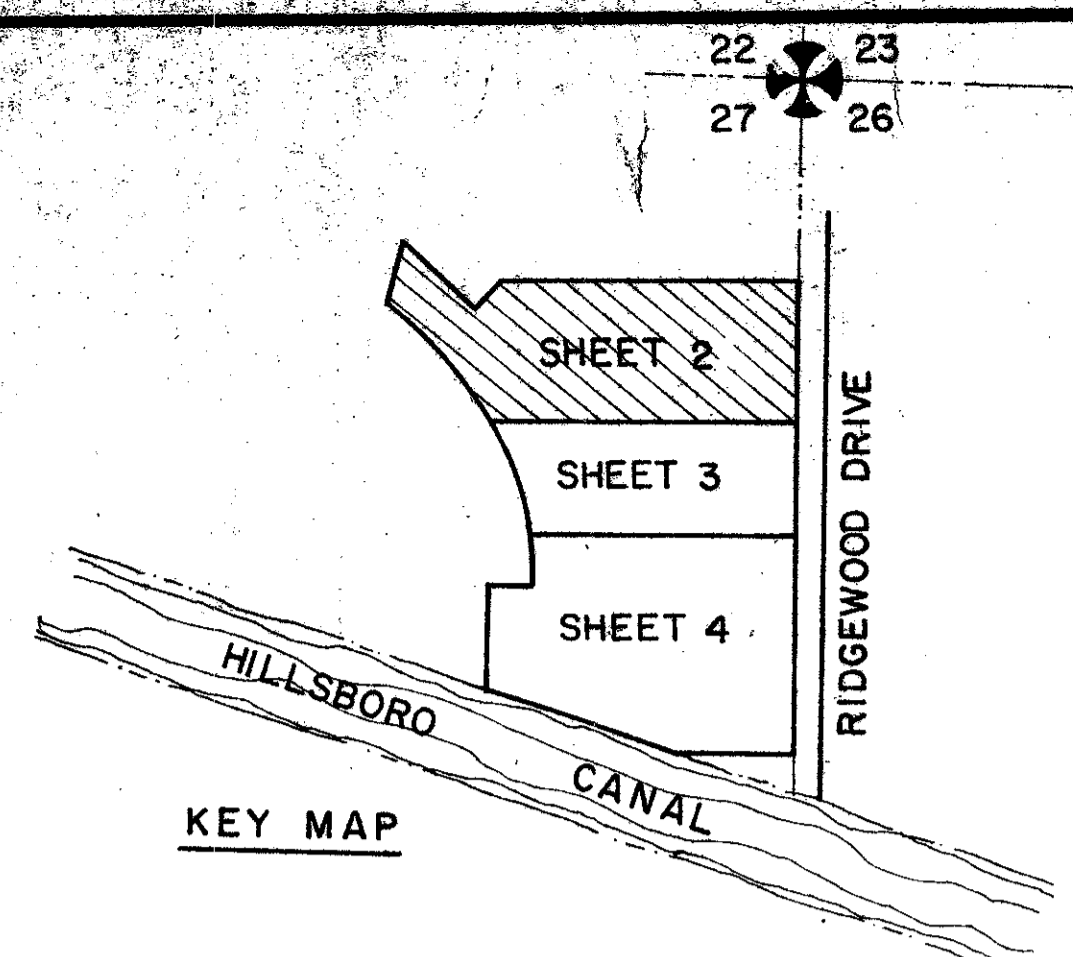
# A PLANNED UNIT DEVELOPMENT PLAT NO. 3 OF BAY WINDS

BEING A SUBDIVISION OF LAND IN SECTION 27, TOWNSHIP 47 SOUTH, RANGE 41 EAST BEING A REPLAT OF PORTIONS OF TRACTS 4, 5, 6, 25 & 26, FLORIDA FRUIT LANDS COMPANY'S SUBDIVISION NO. 2 (P.B. 1, PG. 102.)

PALM BEACH COUNTY, FLORIDA

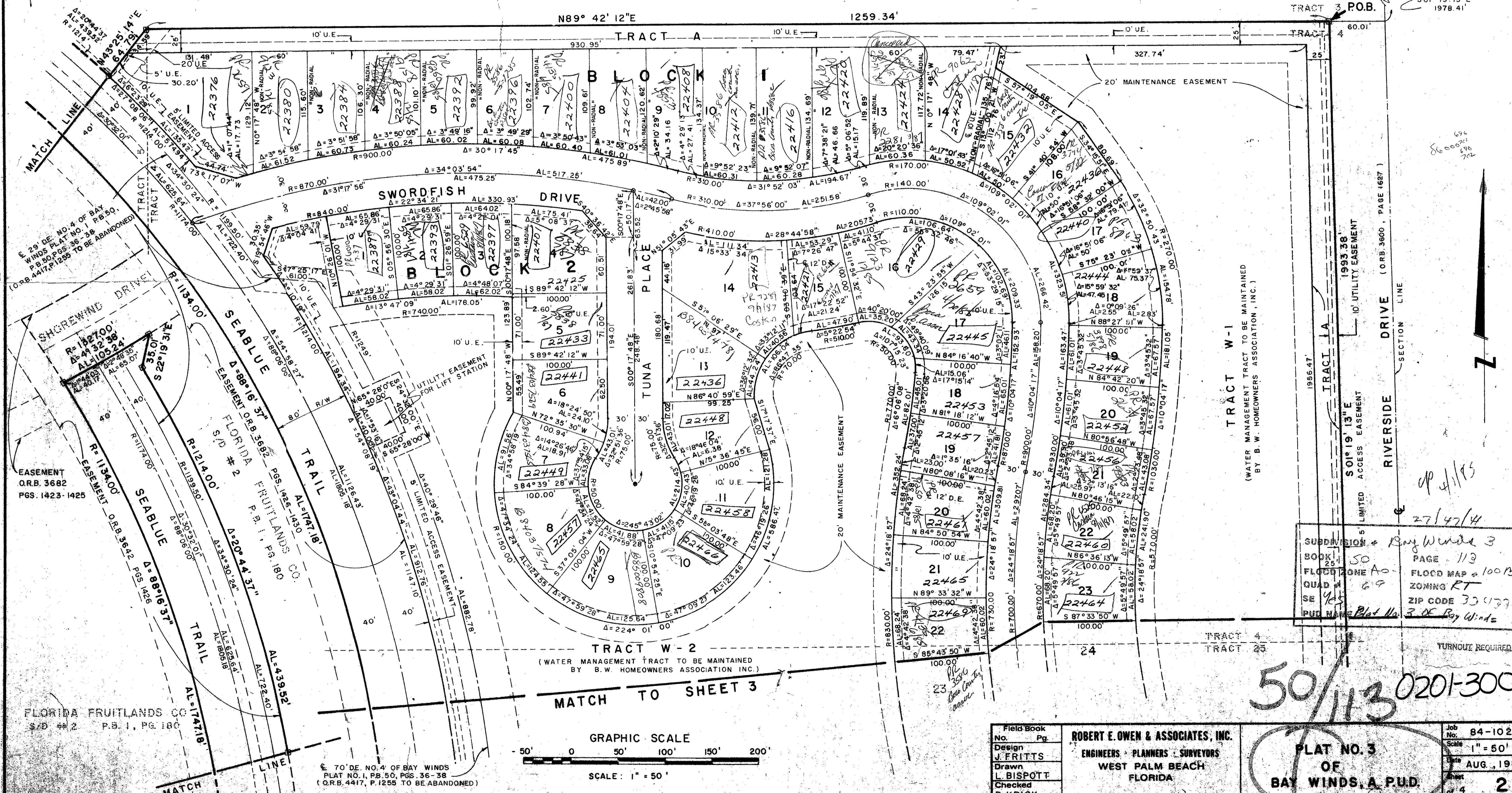
SHEET 2 OF 4

AUGUST, 1984



FLORIDA FRUITLANDS CO.  
S/D # 2 P.B. 1, PG. 183

NORTHEAST CORNER OF SECTION 27/47/41  
P.O.C.  
S 01° 19' 13" E 1978.41'



DRAWING NUMBER

DRAWING NUMBER

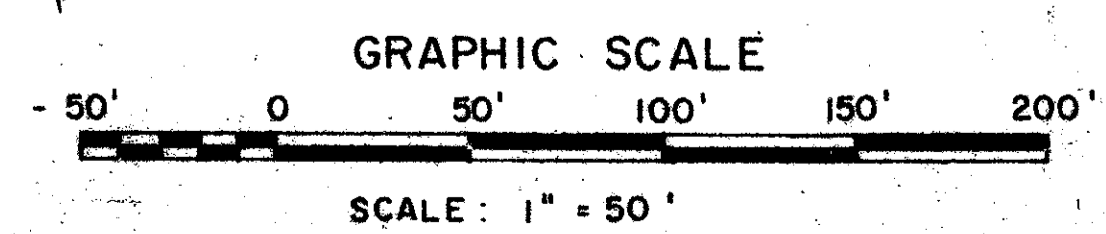
DRAWING NUMBER

PLAN HEAD 2-28-84 (REV. 1-2-84) DRAWN BY J.P. FRITTS CHECKED BY L. BISPOTT

PLAN HEAD 2-28-84 (REV. 1-2-84) DRAWN BY J.P. FRITTS CHECKED BY L. BISPOTT

FLORIDA FRUITLANDS CO.  
S/D # 2 P.B. 1, PG. 183

70° DE. NO. 4 OF BAY WINDS  
PLAT NO. 1, P.B. 50, PGS. 36-38  
(O.R.B. 4417, P. 1255 TO BE ABANDONED)



NOTE: ALL LOT LINES ARE RADIAL UNLESS OTHERWISE NOTED.

SUBDIVISION	Bay Winds 3
BOOK	50
FLOOD ZONE	A0
QUAD	69
SR	95
PLAT NAME	Plat No. 3 of Bay Winds
PAGE	113
FLOOD MAP	a 100B
ZONING	RT
ZIP CODE	33417
PLAT NO.	3 OF Bay Winds

Field Book No.	Pg.
Design	J. FRITTS
Drawn	L. BISPOTT
Checked	P. KRICK

ROBERT E. OWEN & ASSOCIATES, INC.  
ENGINEERS - PLANNERS - SURVEYORS  
WEST PALM BEACH  
FLORIDA

PLAT NO. 3  
OF  
BAY WINDS, A.P.U.D.

Job No.	84-1028
Scale	1" = 50'
Date	AUG., 1984
Sheet of 4	2
File No.	BF-2325-C

50/113 0201-300

27/47/41

TURNOUT REQUIRED